



M<sup>3</sup>S

# Materials Electron Microscopy At the Limit

A Midwest Microscopy and Microanalysis Society Workshop  
on Advanced Electron Microscopy in Materials Science.

**Wednesday, August 26<sup>th</sup> 2009**

**8.30 AM – 4.30 PM at the UIC Forum.**

**RSVP required by Monday, August 24<sup>th</sup>**

Email: Alan Nicholls at [nicholls@uic.edu](mailto:nicholls@uic.edu)

Onsite Registration (**Cash or Check only**):

M3S members: \$10.00, Non-members \$30.00

Students \$10.00 (M3S membership included)

Tables available for exhibitors at \$100

**Program:**

**9.00 – 9.15 Welcome and Introduction**

**9.15 – 9.45 I. Arslan** (UC Davis - **MSA Touring Speaker**)

*High Resolution 3-D Characterization of Nanomaterials using Tilt Tomography in the Scanning Transmission Electron Microscope*

**9.45 – 10.15 N. Zaluzec** (Argonne)

*Pushing the Limits of AEM: Where are we now and where are we going?*

**10.15 – 10.45 W. Walkosz** (University of Illinois at Chicago)

*Atomic Scale Characterization and First-Principles Study of alpha and beta phases of Si<sub>3</sub>N<sub>4</sub>*

**10.45 – 11.00 Coffee Break**

**11.00 – 11.30 E.A. Stach** (University of Purdue)

*Using in-situ TEM to understand growth termination of water-assisted single-walled carbon nanotube arrays*

**11.30 – 12.00 Y. Ito** (Northern Illinois University & Argonne)

*Electron Magnetic Dichroism*

**12.00 – 1.30 Outside Lunch (see page 4 for options)**

**1.30 – 2.00 P. Voyles** (University of Wisconsin Madison)

*Fluctuation Microscopy: Nanoscale Order in Amorphous Materials from Electron Nanodiffraction*

**2.00 – 2.30 J.M. Zuo** (University of Illinois – Urbana Champaign)

*Atomic Resolution Characterization of Nanoscale Interfaces and Surfaces*

**2.30 – 3.00 M. Tanase** (University of Illinois at Chicago)

*Magnetization Behavior In Patterned Thin Film Heterostructures*

**3.00 – 3.15 Coffee**

**3.15 – 3.45 A. Petford-Long** (Argonne)

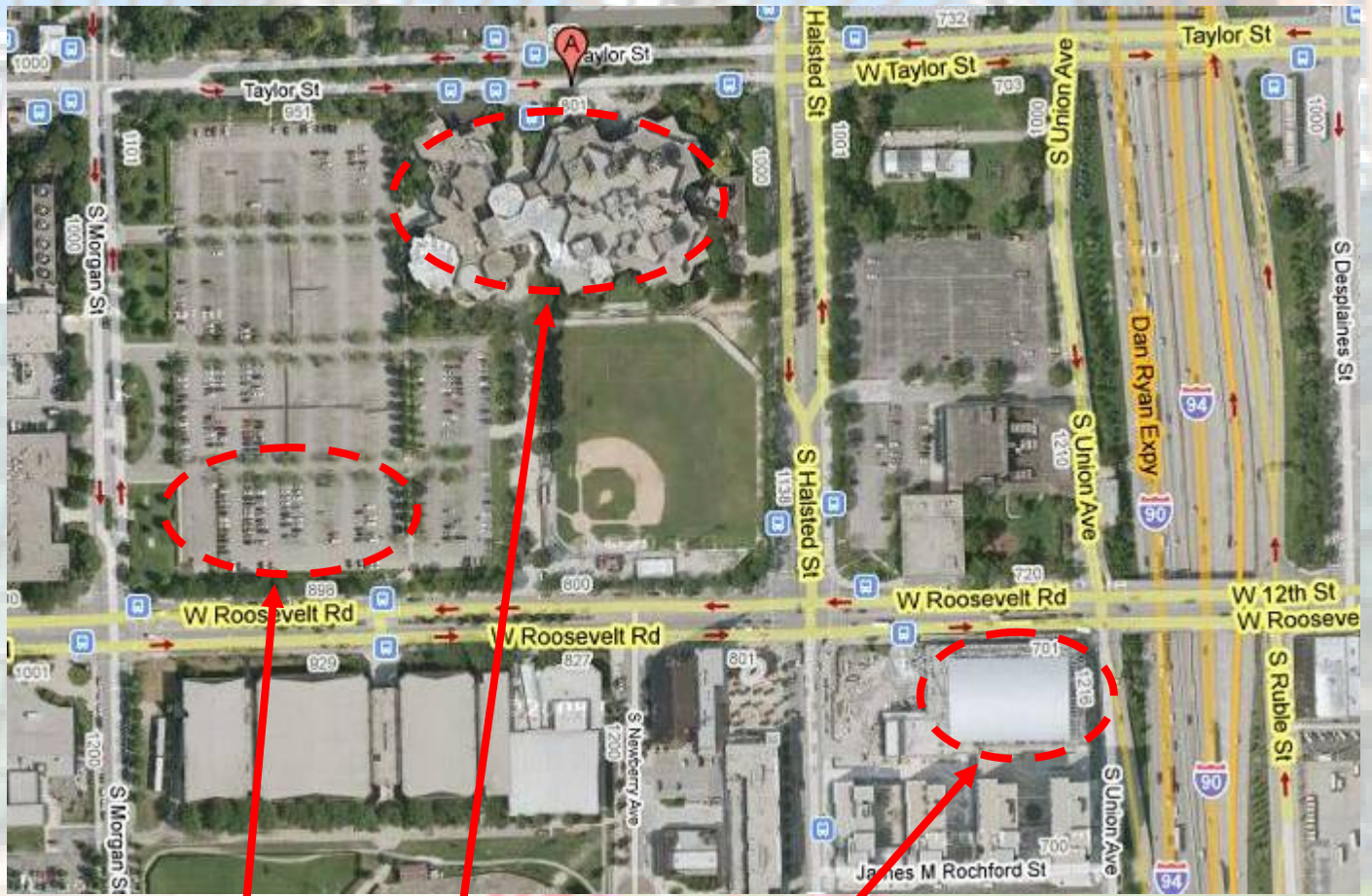
*Structure property relationships in nanoscale magnetic heterostructures*

**3.45 – 4.15 R.F. Klie** (University of Illinois at Chicago)

*Aberration-corrected STEM analysis at UIC*

**4.15 Concluding remarks / Tour RRC-East**

## Location and Parking Map:



SES

Parking

**UIC Forum**  
**725 W. Roosevelt Rd.**

### Directions:

Take the Roosevelt Rd./Taylor St exit from I90/94.

Turn left onto W. Roosevelt Rd.

UIC Forum is on the south side of Roosevelt between I90/94 and Halsted.

Ample parking located two blocks west of the UIC Forum at 1135 S. Morgan St. Lot 5.

## LUNCH OPTIONS

The map shows the location of cafes & restaurants in the new University Village neighborhood south of the UIC Forum which are open at lunchtimes. Most are on Maxwell St between Halsted & Union.

If you are interested in trying the Original Maxwell St Polish Sausage Sandwich this is served at Jim's (3) which was originally located at Maxwell & Halsted from 1939 to 2001. The two hot dog stands are takeaway only.

### Key

1. Massa Italian Café
  2. Francanello
  3. Jim's Polish Hot Dog Stand (The original Maxwell St one)
  4. Express Grill Polish Hot Dog Stand
  5. Jamba Juice
  6. Kohan
  7. Caribou Café
  8. Morgan's Bar & Grill
  9. Lalo's Mexican Restaurant
  10. Hash Brown Café
  11. Perry's Deli
  12. WOW Café & Wingery New Orleans inspired sandwiches
  13. Quizno's
  14. Joy Yee Noodle
- Italian Restaurant*
- Sushi & Japanese  
Coffee, Bakery  
American Traditional*
- All day breakfast & sandwiches*
- Pan Asian Cuisine*

